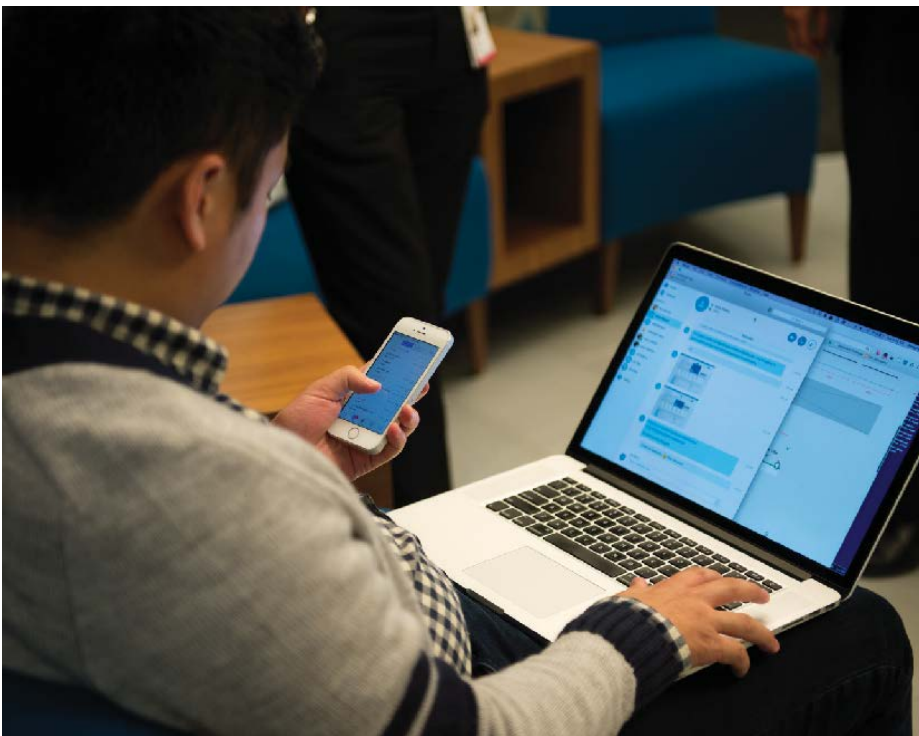


Your business runs fast. It needs an Internet service provider that can keep up.



AT&T Internet Access provides you super-fast Internet access using multiple broadband access technologies. With the features you need to stay connected to your customers, business partners, suppliers and employees.

- Speeds up to 1Gbps downstream/upstream at an affordable price
- Reliability you can count on – optimal performance, scalability over AT&T’s highly secure network
- High capacity to support multiple employees that need simultaneous Internet access
- The ability to support a Wi-Fi network for your employees or your customers

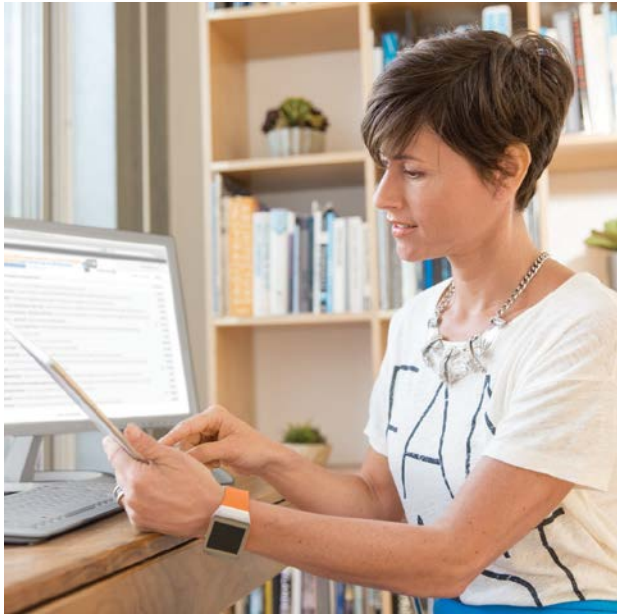
Features:

- Symmetric and Asymmetric speeds from 768Kbps up to 1Gbps
- Direct Consumption Quote API to accelerate quoting process
- Static and Dynamic IP addressing
- Single contract and invoice for all locations
- Wi-Fi networking via Router or Fiber Broadband Gateway
- On-site installation by AT&T technicians*

Potential benefits:

- Quickly upload, download and share large data files
- Easily back up to the cloud from one or more data locations
- Video conference with customers, suppliers and business partners
- Faster research and browsing on the web

* Installation charges may apply depending on service option ordered.



Broadband Access

Customer locations may qualify for several transport options provisioned using copper, a combination of copper and fiber, or all fiber. For customers in AT&T Fiber ready buildings, service is provisioned on Ethernet over fiber up to 1Gbps with asymmetrical and symmetrical options.

Reliability in the Network

AT&T is a leading Tier-1 Internet service provider with a high performing IP network and service level agreements including install intervals, network availability, network latency and packet loss.

AT&T Internet Access is no ordinary Internet connection. Businesses can expect reliability, optimal performance, and scalability on a highly secure network from one of the world's leading service providers.

Consolidate and save


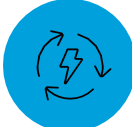



AT&T Internet Access offers

- 21-state footprint
- Single contract and discounting covering multiple Broadband and DSL technologies
- Utilize the AT&T Partner Exchange Portal for prequalification, site design, and site inventory
- Platform to support over-the-top customer applications

What can you do with faster Internet speeds?

- Ready access to AT&T's high-speed fiber backbone at qualifying building locations.
- Quickly upload, download, and share large data files and images.
- Easy backup in the cloud at one or multiple locations.
- Video conference with suppliers, customers, and business partners.
- Reliability, optimal performance scalability, and great security features.

What can you do with faster Internet speeds?

 <p>Ready access to AT&T's high-speed fiber backbone at qualifying building locations.</p>	 <p>Quickly upload, download, and share large data files and images.</p>	 <p>Easy backup in the cloud at one or multiple locations.</p>	 <p>Video conference with suppliers, customers, and business partners.</p>	 <p>Reliability, optimal performance scalability, and great security features.</p>
---	---	---	--	---